



**Appendix 12: Ferriman-Gallwey score (FG-score), graduering af hirsutisme**

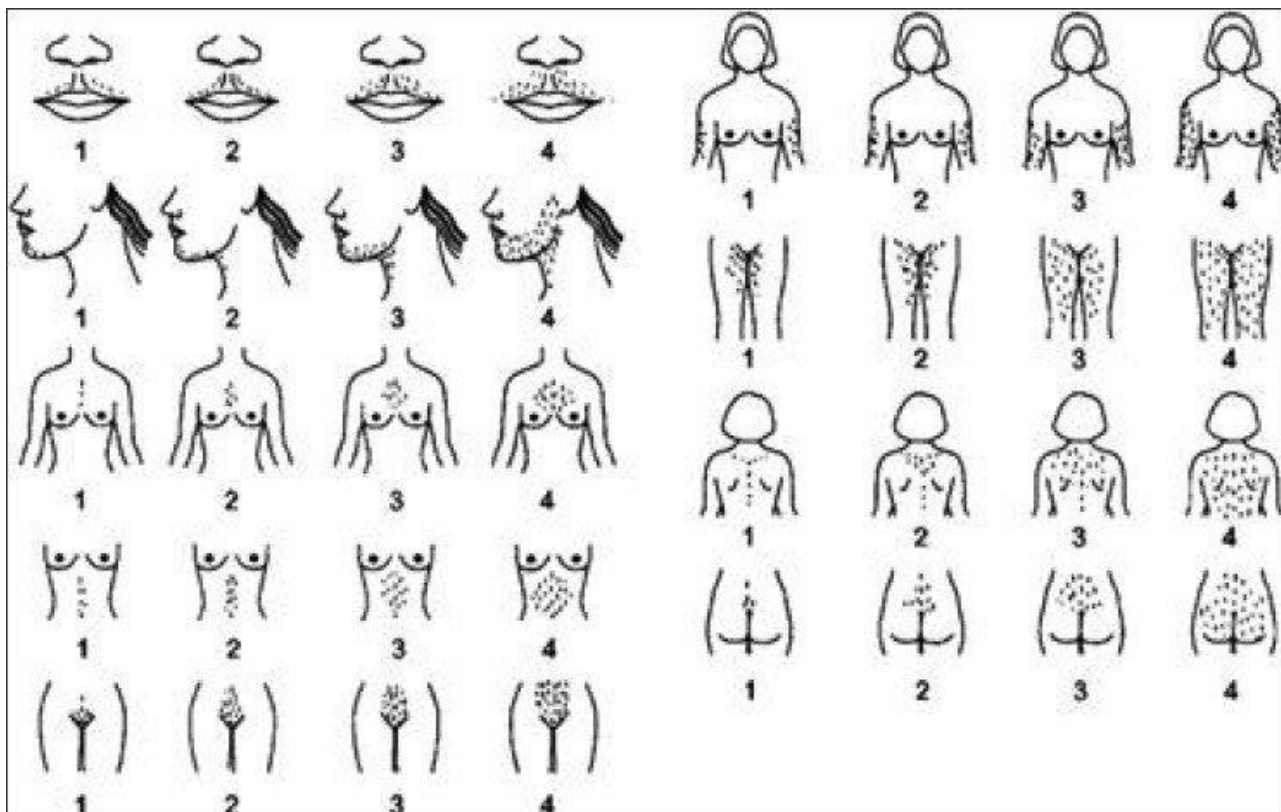


TABLE 1. DEFINITION OF HAIR GRADINGS AT EACH OF 11 SITES  
(Grade 0 at all sites indicates absence of terminal hair.)

Site	Grade	Definition
1. Upper Lip	1	A few hairs at outer margin.
	2	A small moustache at outer margin.
	3	A moustache extending halfway from outer margin.
	4	A moustache extending to mid-line.
2. Chin	1	A few scattered hairs.
	2	Scattered hairs with small concentrations.
	3 & 4	Complete cover, light and heavy.
3. Chest	1	Circumareolar hairs.
	2	With mid-line hair in addition.
	3	Fusion of these areas, with three-quarter cover.
	4	Complete cover.
4. Upper back	1	A few scattered hairs.
	2	Rather more, still scattered.
	3 & 4	Complete cover, light and heavy.
5. Lower back	1	A sacral tuft of hair.
	2	With some lateral extension.
	3	Three-quarter cover.
	4	Complete cover.
6. Upper abdomen	1	A few mid-line hairs.
	2	Rather more, still mid-line.
	3 & 4	Half and full cover.
7. Lower abdomen	1	A few mid-line hairs.
	2	A mid-line streak of hair.
	3	A mid-line band of hair.
	4	An inverted V-shaped growth.
8. Arm	1	Sparse growth affecting not more than a quarter of the limb surface.
	2	More than this; cover still incomplete.
	3 & 4	Complete cover, light and heavy.
9. Forearm	1, 2, 3, 4	Complete cover of dorsal surface; 2 grades of light and 2 of heavy growth.
10. Thigh	1, 2, 3, 4	As for arm.
11. Leg	1, 2, 3, 4	As for arm.